

## Day Moisturizer

Add in Moisture, Subtract the Years.



### Day Moisturizer with myrtle leaf

For the ultimate in hydration, nourish and smooth your skin with our Day Moisturizer. Formulated with lavender extract and sunflower seed oil for long-lasting moisturization, it also contains rich myrtle leaf extract, a botanical known to help reduce the appearance of fine lines and wrinkles.

Give your skin the love it deserves every day.

**Directions:** After Multiphase Serum is absorbed, apply Day Moisturizer to the delicate area around the eye and to the face, neck and décolleté.



#### Myrtle leaf

Botanical extract known to help hydrate skin and minimize the signs of aging.

90% of participants showed improvements in skin moisture content eight hours after a single application of the Day Moisturizer.<sup>†</sup>

### Day Moisturizer

Product Number	Member Price	Associate Price
42001	\$51.77	\$49.00

**Ingredients:** Water (Aqua), Glycerin, Methylsilanol Mannuronate, Caprylic/Capric Triglyceride, Cyclopentasiloxane, Ethyl Macadamiate, Helianthus Annuus (Sunflower) Seed Oil Unsaponifiables, Helianthus Annuus (Sunflower) Seed Oil, Cocos Nucifera (Coconut) Oil, Montmorillonite, Galactoarabinan, Aloe Barbadensis Leaf Juice Powder, Trehalose, Hydrolyzed Myrtus Communis Leaf Extract (Myrtle Leaf), Corylus Avellana (Hazel) Seed Extract, Lavandula Angustifolia (Lavender) Flower/Leaf/Stem Extract, Salicornia Herbacea Extract, Allantoin, Tocopherol, Malic Acid, Cyclomethicone, Polyacrylamide, Caprylyl Glycol, C13-14 Isoparaffin, Acrylates/C10-30 Alkyl Acrylate Crosspolymer, Phenoxyethanol, Xanthan Gum, Disodium EDTA, Hexylene Glycol, Sodium Hyaluronate, Sodium Hydroxide, Laureth-7, Ethylhexylglycerin, Sorbic Acid, Potassium Sorbate.

<sup>†</sup>Based on a 12-week study by Stephens & Associates, Carrollton, Texas; funded by Mannatech, Incorporated.



## Night Repair Crème

Reset the Clock Every Night.

### Night Repair Crème with olive extracts

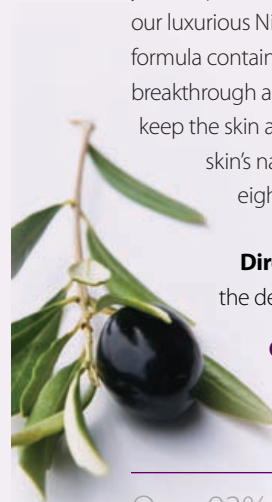
Bring out your natural radiance and beauty while you sleep with the crème de la crème of treatments: our luxurious Night Repair Crème. This exceptional formula contains a blend of natural botanicals and a breakthrough amino acid-based ingredient that helps keep the skin at rest during the night, enhancing the

skin's natural repairing system—reducing the appearance of fine lines and wrinkles in just eight weeks. Wake up with smooth, glowing skin every single day.

**Directions:** For evening use. After cleansing the skin, apply a generous amount to the delicate area around the eye and to the face, neck and décolleté.

#### Olive extracts

An ancient beauty secret, olive oil extract naturally softens and moisturizes the skin.



Over 93% who tried the Night Repair Crème showed dramatic improvements in skin moisture after a single application.<sup>†</sup>



### Night Repair Crème

Product Number	Member Price	Associate Price
42101	\$62.22	\$59.00

**Ingredients:** Water (Aqua), Ethyl Macadamiate, Jojoba Esters, Glycerin, Propanediol, Caprylic/Capric Triglyceride, Glyceryl Stearate, Helianthus Annuus (Sunflower) Seed Oil, Cetearyl Oliviate, Hydrogenated Olive Oil, Dimethicone, Palmitoyl Glycine, Montmorillonite, Galactoarabinan, Aloe Barbadensis Leaf Juice Powder, Trehalose, Sodium Hyaluronate, Olea Europaea (Olive) Fruit Oil, Olea Europaea (Olive) Oil Unsaponifiables, Olea Europaea (Olive) Leaf Extract, Solanum Lycopersicum (Tomato) Fruit/Leaf/Stem Extract, Corylus Avellana (Hazel) Seed Extract, Cocos Nucifera (Coconut) Oil, Sorbitan Oliviate, Hordeum Vulgare Extract, Saccharomyces Cerevisiae Extract, Panthenol, Tocopherol, Salicornia Herbacea Extract, Algae Extract, Lavandula Angustifolia (Lavender) Flower/Leaf/Stem Extract, Malic Acid, Phenoxyethanol, Xanthan Gum, Hexylene Glycol, Disodium EDTA, Sodium Hydroxide, Ammonium Acryloyldimethyltaurate/VP Copolymer, Urea, Potato Starch Modified, Glucosamine HCl, Caprylyl Glycol, 3-Aminopropanol.

<sup>†</sup>Based on a 12-week study by Stephens & Associates, Carrollton, Texas; funded by Mannatech, Incorporated.