

A split-level photograph of a tropical beach. The top half shows a clear blue sky with scattered white clouds and a turquoise ocean. Large, dark, rounded rocks are visible in the background. The bottom half shows an underwater view of a person snorkeling in clear turquoise water. The person is wearing a blue patterned shirt and shorts, and is holding a snorkel. Three sea turtles are swimming around the person. The water is very clear, and the sunlight creates a shimmering pattern on the sandy bottom.

# BORNEO

Travel Incentive

Incentive Period: BP5-BP8 2016 (9 April to 29 July 2016)  
Travel Period: 12 to 17 November 2016

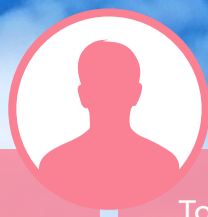


# ADVENTURE AWAITS

Lush rainforests, remote tropical islands and mysterious jungle valleys; Borneo awaits your discovery. Teeming with a plethora of exotic wildlife and natural wonders, Borneo holds the secrets of the natural world, hosting the oldest rainforests on Earth with an estimated age of 130 million years old. Get in touch with your wild side in the shadow of the tallest mountain in South East Asia, the colossal Mt. Kinabalu, towering over 4000 metres high. Hear the historically significant and moving stories of your local guides as they chaperone you on your journey of discovery; helping you shake hands with the local orangutan population, dive with turtles in one of the many vibrant tropical reefs or identify the largest flower known to man. Embark on your journey of self discovery, earn your way to the adventure of a lifetime.

# HOW TO QUALIFY

You must achieve set criteria as outlined in the 4 categories below to earn points from our 4 main criteria to qualify



# PACKAGE POINTS

To earn a complete incentive trip you need to earn the total number of points, as shown below, based on your region. For an additional 35 points Associates may have the option to obtain a standard room to themselves. Rooms are limited, this offer is subject to availability and is provided on a first come first serve basis. A non-share room is not available in all locations.

AU	NZ	SG
280	280	200



## My Order

Retain your wellness! Place an Automatic order of 100 Point Value (PV) or more each BP of the incentive period.



## My Team

Build your team! Introduce new people to Mannatech and earn a minimum of 30 Pack Points.



## My Growth

Set new goals! Maintain or increase your leadership level from that held at the end of BP4 2016 and hold it for a minimum of 2BPs within the incentive period, including BP8 2016.



## Our Growth

Encourage team growth! Maintain or increase your total cumulative Group Point Value (GPV) for the incentive period, based off your total cumulative GPV throughout BP1 2016 – BP4 2016. Help your team soar, and travel together on this trip of a lifetime.

# HOW TO EARN POINTS

Providing you meet all the above requirements, you will earn points in a variety of ways. By ordering products through an Automatic order (My Order), by introducing new people to Mannatech (My Team) By maintaining or growing your leadership level (My Growth) and by helping your team do the same (Our Growth).

**Place an Automatic order** of 100pv point value or more and encourage others to do the same every BP.

For an Automatic order to qualify it must be maintained for a minimum of 2 BPs.

Automatic Order	Points
New Automatic Order	4
Reactivated Automatic Order	1

**Introduce new people** to Mannatech.

**Pack points** will only be awarded, if accompanied by a 100PV AO shipped during the incentive period.

Introduce new people to Mannatech and earn a minimum of 30 Pack Points.

Packs	Points
Associate Registration Pack/ SG Free Registration Pack	0
Üth™ Preferred Pack	3
Üth™ Plus Pack	4
Üth™ Trio Pack	5
Champion Pack AU\$150	5
Sports Pack	5
Your Body Your Way Fat Loss Pack	7
Champion All Star Pack AU\$598Pack	10
Team Builder All Star Pack	15

**Maintain or elevate** to the next leadership level based on your BP4 leadership level. You either must maintain this base leadership level for at least 2 BPs and must not have dropped below your initial leadership level by the end of the incentive period (BP8 2016)

### New Leaderships:

Achieve a never-before-achieved leadership level and maintain it for a minimum 2 additional BP during the incentive period in order to earn Leadership points.

### Requalified Leadership:

Requalify to a leadership level previously held that is higher than that held at any time during the last 4 BPs (BP1 2016 – BP4 2016). Then this leadership must be maintained for a minimum 1 additional BP during the incentive period before any leadership level points are awarded.

Leadership level	2 out of 4	3 out of 4	4 out of 4
RD	20	30	40
ND	50	65	80
SND	75	100	125
ED	105	145	185
SED	160	220	280
PD	210	310	410

**Enroller Leadership Development** points will be awarded according to how many BPs your team member/enrollee maintains their new or requalified leadership level during the incentive period.

**Points** will only be awarded once the enrollee has been awarded their leadership points.

Leadership level	2 out of 4	3 out of 4	4 out of 4
RD	5	10	15
ND	10	20	30
SND	15	30	45
ED	20	40	60
SED	30	60	90
PD	70	140	210

BORNEO

## Terms & Conditions

### My Order

- A new Automatic Order is an automatic order that has never occurred before. A new Automatic Order with a minimum of 100PV, shipped within the incentive period, will earn the enroller 4 points per BP that it generates.
- A Reactivated Automatic Order is any order that did not generate in the prior 13 BPs (BP5 2015 – BP4 2016). A reactivated order with a minimum of 100PV, shipped within the incentive period, will earn the enroller 1 point per BP that it generates.
- A maximum of 30 points will be awarded from reactivation AOs.

### My Team

- While the Associate Registration Pack earns you 0 points, You can earn pack points by signing up 10 new people with a registration pack (AU\$12 / NZ\$13 / SG Free) as long place 2 x 100PV AOs before the end of the incentive period, to qualify for other points to be awarded.
  - Pack points will only be awarded, if accompanied by a 100PV AO shipped during the incentive periods.
- You must have a minimum of 30 Points from Pack Points any other points will be awarded OR have 10 new registration packs (AU\$12 / NZ\$13 / SG Free) and they must be accompanied by 2 x 100PV AOs any other points will be awarded.

### My Growth

- **New leaderships:** achieve a never-before-achieved leadership level and maintains it for a minimum 1 additional BP during the incentive period in order to earn Leadership points. As per the table shown.
- **Requalified Leadership:** requalify to a leadership level previously held that is higher than that held at any time during the last 4 BPs (BP1 2016 – BP4 2016). This leadership must be maintained for a minimum 1 additional BP during the incentive period before any leadership level points are awarded.

The number of points earned for Leadership depends upon how many times this new or requalified leadership is held during the incentive period.

### Examples:

1. If you achieved a new or requalified RD leadership and maintained this in BP5, BP7 and BP8, it means you have held this new or requalified leadership 3 out of the possible 4 BPs and therefore will be awarded 30 points.
2. If you requalified to an ND leadership in BP5 then went up to a new SND leadership in BP6 and maintained SND in BP7 and then dropped back down to ND in BP8, you will be awarded 80 pts for holding ND leadership for 4 out of the 4 BPs and 75 pts for SND as you held this leadership for 2 out of the 4 BPs giving you a total of 155 pts.

### Our Growth

Like the My Growth points award system, points will be award according to how many BPs the enrolee maintains their new or requalified leadership level. You must achieve set criteria as outlined in the 4 categories above to earn points from our 4 main criteria to qualify.

#### Mannatech Swiss International GmbH

C/O Mannatech Australia Pty Ltd  
Locked Bag 5000, St Leonards,  
NSW 2065, AUSTRALIA

For distribution in Australia, New Zealand & Singapore

For information on this incentive contact **Business**

**Development** at: [bdev@mannatech.com.au](mailto:bdev@mannatech.com.au)

or call **Customer Service** on:

**AU** 1300 361 878 | **NZ** 0800 333 250 | **SG** 800 130 1597

[au.mannatech.com](http://au.mannatech.com)